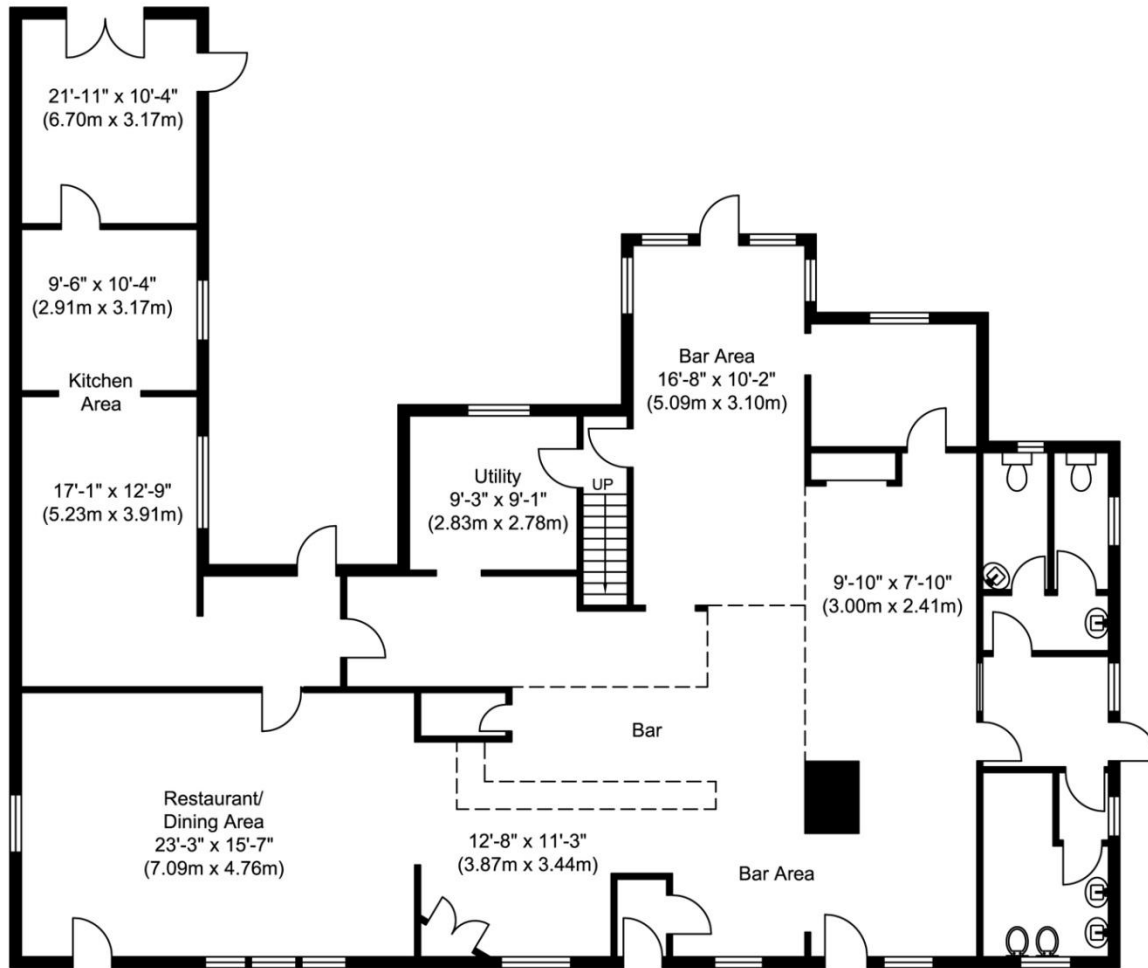


The Horns, Wargrave – Ground Floor

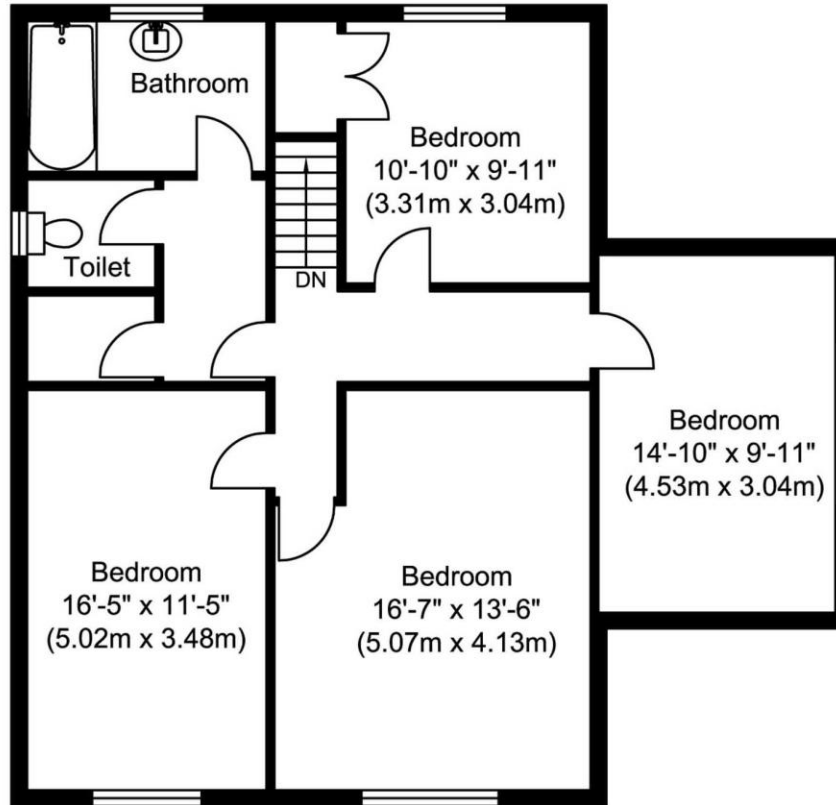


Ground Floor
Approximate Floor Area
2320.37 sq. ft.
(215.57 sq. m)

The Horns, Crazies Hill, Wargrave, Berkshire RG10 8LY

Whilst every attempt has been made to ensure the accuracy of the floor plan contained here, measurements of doors, windows, rooms and any other items are approximate and no responsibility is taken for any error, omission, or mis-statement. This plan is for illustrative purposes only and should be used as such by any prospective purchaser. The services, systems and appliances shown have not been tested and no guarantee as to their operability or efficiency can be given.
www.virtual360.net

The Horns, Wargrave – First Floor



First Floor
Approximate Floor Area
885.55 sq. ft.
(82.27 sq. m)

The Horns, Crazies Hill, Wargrave, Berkshire RG10 8LY

Whilst every attempt has been made to ensure the accuracy of the floor plan contained here, measurements of doors, windows, rooms and any other items are approximate and no responsibility is taken for any error, omission, or mis-statement. This plan is for illustrative purposes only and should be used as such by any prospective purchaser.

The services, systems and appliances shown have not been tested and no guarantee as to their operability or efficiency can be given.

www.virtual360.net